

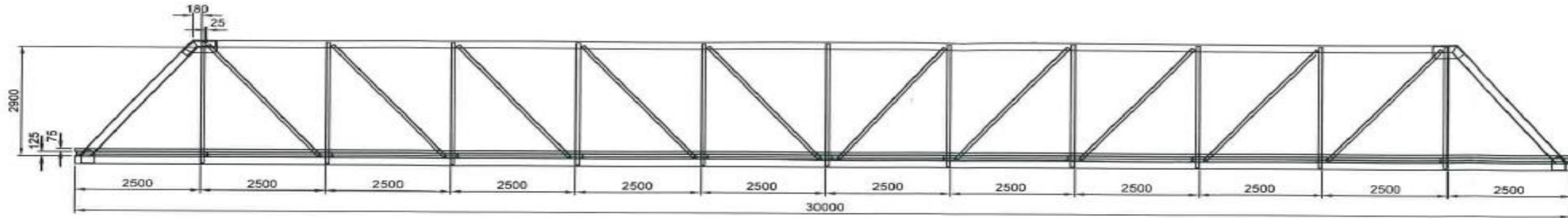
**Subject:** DESIGN, CONSTRUCTION, SUPPLY, INSTALLATION, TESTING AND COMMISSIONING OF STEEL PONTOONS, AND GANGWAYS FOR PROVIDING FLOATING TERMINAL FACILITIES IN MATHURA (NW-110) & AYODHYA (NW-40) DISTRICT, UTTAR PRADESH TENDER

**Reference:** IWAI/Floating jetty/NW-110 & 40

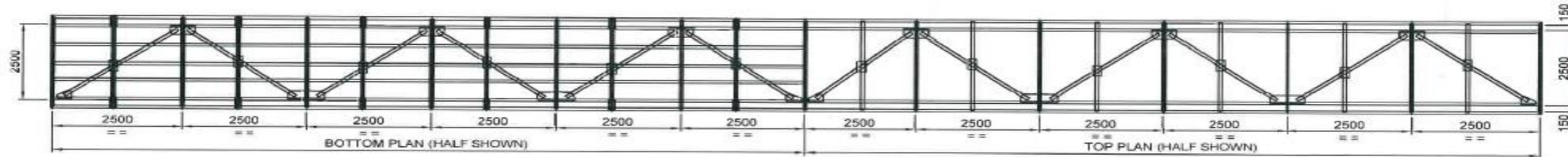
**CPP Portal Tender no:** 2023\_IWAI\_772820\_1

**Amendment - 4**

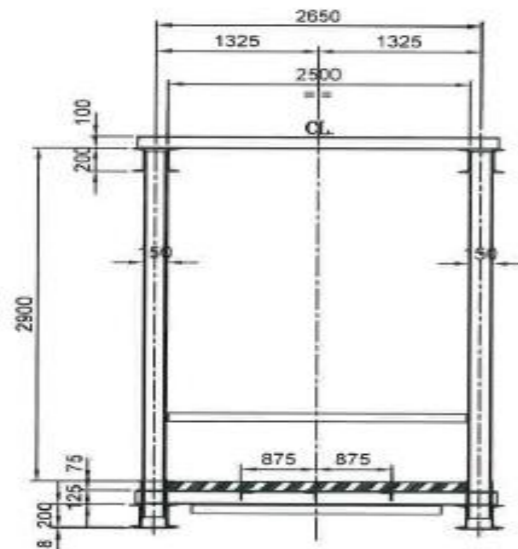
<b>S. No.</b>	<b>Clause No./Page No.</b>	<b>As per amendment-3</b>	<b>As amended in this amendment</b>
1.	PART I – DETAILED SCOPE OF WORK 2. Scope of Work, Page No 78 & 79	The indicative specification of Steel Gangway is attached as <b>Annexure-1</b> in the Pre-bid Response.	The indicative specification of Steel Gangway is attached as <b>Annexure-1</b>



ELEVATION OF 30 M. LONG GANGWAY



BOTTOM & TOP PLAN OF THE 30 M. LONG GANGWAY



MAIN PARTICULARS

LENGTH --- 30.00 M.  
BREADH(INSIDE) - 02.50 M.  
DEPTH --- 02.90 M.

CROSS SECTION OF 30 M LONG GANGWAY

## **TECHNICAL SPECIFICATIONS FOR SUPPLY, FABRICATION, DELIVERY, AND INSTALLATION OF GANGWAYS**

### **a. SCOPE OF WORK**

The work comprises fabrication, supply, delivery and installation of three nos. of steel gangways of approximate size of 30m x 2.5m made of simple rolled structural members including hinge connection and bolting on the pontoon platform structure and roller mechanism on the pontoon as per design drawings and as per direction of Engineer.

### **b. MATERIAL**

Gangways shall be fabricated using simple rolled structural members e.g. plate, joists, angle, channel sections etc. conforming to IS: 2062, IS: 808 & SP (6) -1964. All steel plates, sections and bars supplied by the Contractor must be free from cracks, surface, Flaws, lamination and all other defects and shall be finished in a workmanlike manner.

### **c. WELDING**

Welding shall be done as per IS 816-1969, IS 9595-1996. All welds are to be continuous fillet weld with minimum size being equal to the lowest thickness of the connected member. Fabrication with necessary metal arc welding using electrodes of approved make and brand conforming to IS: 814-1957. Electrodes shall be stored in a dry and enclosed room as per IS: 816-1969 or as instructed by the Engineer. Electrodes should be perfectly dry and if necessary, are to be drawn from an electric oven.

### **d. PAINTING**

Fabricated gangway shall be applied with two coats of aliphatic acrylic PU paint over two coats of epoxy cured with aliphatic amine over two coats of epoxy phenyl amine primer.

### **e. LOAD TESTING**

Initial sag and deflection of gangways shall be checked at fabrication yard as per IS 10558: 2013

### **INSTALLATION**

Contractor shall be responsible for haulage, hoisting, and erection on the pontoon platform structure including all consumables such as electrodes, gas and hires charge of all tools and plants and labour required for the work including all incidental charges such as crane charges for lifting and placing of gangway over the pontoon platform etc.